



CUSTOMER:

Customer Name: ALINVEST CZ

PROJECT:

Project Code: E2558

Project Name: ALINVEST CZ

DOCUMENT INFORMATION:



Document Title: Equipment Spider Diagram

Customer File Name: 2558-5521-GEN-E-DWG-SPD

Customer Revision Number: -

Customer File Name: 2558-5521-GEN-E-DWG-SPD









Contractor Revision Number: A

						CONTRACTOR		CONTRACTOR dwg number <b>2558-5521-GEN-E-DWG-SPD</b>	Rev. <b>A</b>	Project Code <b>E2558</b>	Project Name <b>ALINVEST CZ</b>			
										Document Title <b>Equipment Spider Diagram</b>			Scale <b>1:1</b>	
<b>A</b>	<b>29/11/2025</b>	<b>INITIAL VERSION</b>		<b>RORI</b>	<b>RORI</b>					<b>JOCA</b>	DESIGNED: <b>ANSA</b>	DRAWN: <b>ANSA</b>		
Rev.	Date	Revisions description		Designed	Draw	Approved	CLIENT	CLIENT dwg number <b>2558-5521-GEN-E-DWG-SPD</b>	Rev. <b>-</b>	DATE: <b>01/12/2025</b>		DATE: <b>01/12/2025</b>	DATE: <b>01/12/2025</b>	Sheet <b>1 OF x</b>
<b>1</b>		<b>2</b>	<b>3</b>	<b>4</b>						<b>5</b>	<b>6</b>	<b>7</b>	<b>8</b>	<b>9</b>

# HYDRAULIC SYSTEM POWER CABINET


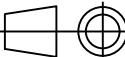
## r43.61-5521-GEN-ESR40-PCP01

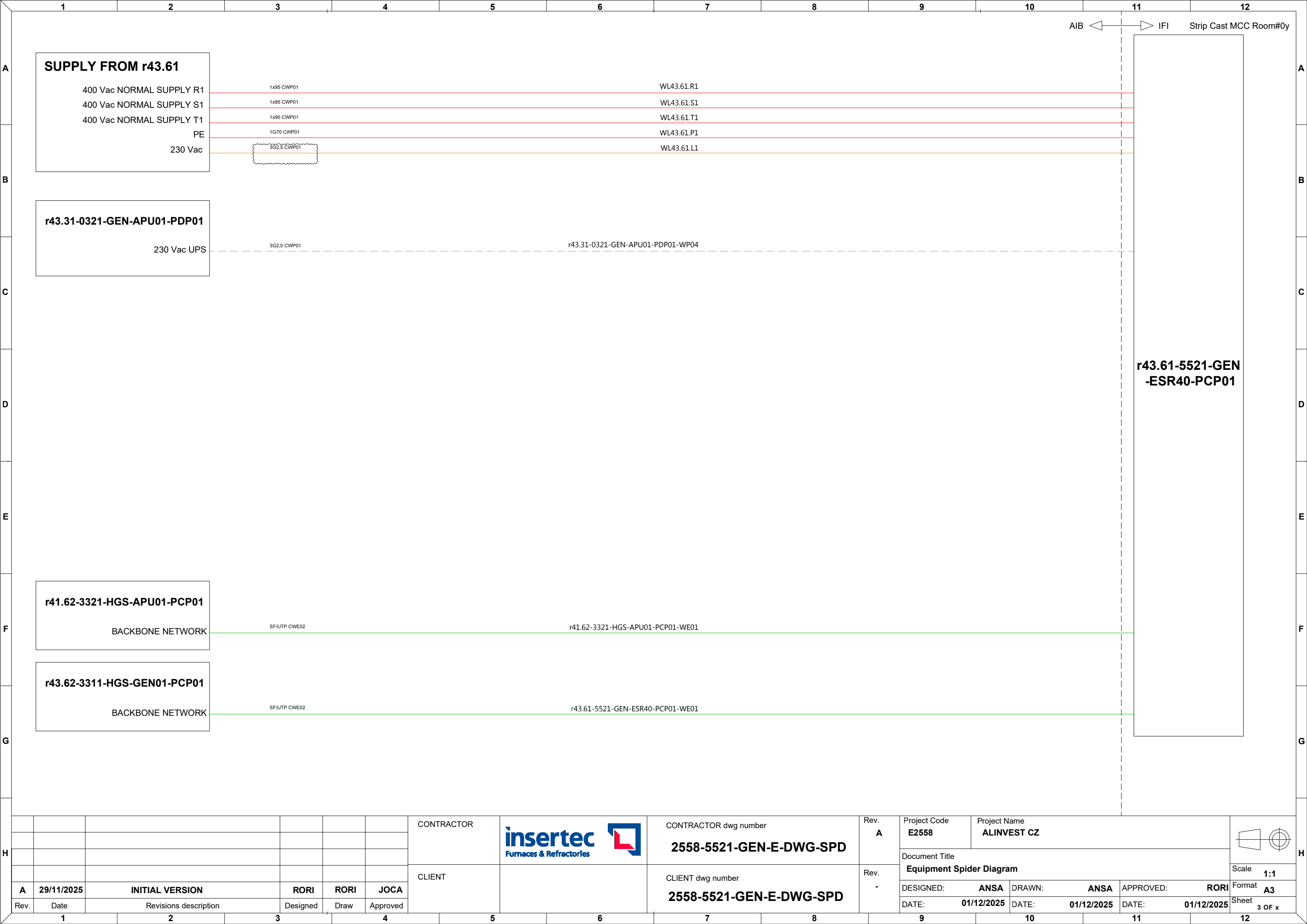
### LEGEND

	400Vac Power supply		Regular control signals
	400Vac UPS power supply		Analog & shielded signals
	230Vac Power supply		T/C connection
	230Vac UPS power supply		Communication connection

### CATEGORY

Power cables
CWP01: Regular power cables
CWP02: Shielded power cable
CWP03: Flexible power cables
CWP04: Regular high temperature power cables
Instrumentation and control cables
CWC01: Regular instrumentation control cables
CWC02: Shielded instrumentation control cables
CWC03: Thermocouple cable
CWC04: Flexible instrumentation control cables
CWC05: High voltage cables for ignition transformers
CWC06: Regular high temperature instrumentation control cables
Communication cables
CWE01: Fieldbus communication cable (Inside cabinets)
CWE02: Fieldbus communication cable (Outside cabinets)
CWE03: Optic fibre communication cable

						CONTRACTOR		CONTRACTOR dwg number <b>2558-5521-GEN-E-DWG-SPD</b>	Rev. <b>A</b>	Project Code <b>E2558</b>	Project Name <b>ALINVEST CZ</b>			
										Document Title <b>Equipment Spider Diagram</b>			Scale <b>1:1</b>	
<b>A</b>	<b>29/11/2025</b>	<b>INITIAL VERSION</b>		<b>RORI</b>	<b>RORI</b>					<b>JOCA</b>	DESIGNED: <b>ANSA</b>	DRAWN: <b>ANSA</b>	APPROVED: <b>RORI</b>	
Rev.	Date	Revisions description		Designed	Draw	Approved	CLIENT	CLIENT dwg number <b>2558-5521-GEN-E-DWG-SPD</b>	Rev. <b>-</b>	DATE: <b>01/12/2025</b>	DATE: <b>01/12/2025</b>	DATE: <b>01/12/2025</b>	Sheet <b>2 OF x</b>	





# HYDRAULIC SYSTEM REMOTE IO

## r43.61-5521-GEN-ESR40-RIO01

### LEGEND

	400Vac Power supply		Regular control signals
	400Vac UPS power supply		Analog & shielded signals
	230Vac Power supply		T/C connection
	230Vac UPS power supply		Communication connection

### CATEGORY

Power cables
CWP01: Regular power cables
CWP02: Shielded power cable
CWP03: Flexible power cables
CWP04: Regular high temperature power cables
Instrumentation and control cables
CWC01: Regular instrumentation control cables
CWC02: Shielded instrumentation control cables
CWC03: Thermocouple cable
CWC04: Flexible instrumentation control cables
CWC05: High voltage cables for ignition transformers
CWC06: Regular high temperature instrumentation control cables
Communication cables
CWE01: Fieldbus communication cable (Inside cabinets)
CWE02: Fieldbus communication cable (Outside cabinets)
CWE03: Optic fibre communication cable

CONTRACTOR



CONTRACTOR dwg number

2558-5521-GEN-E-DWG-SPD

Rev.

A

Project Code

E2558

Project Name

ALINVEST CZ

CLIENT

CLIENT dwg number

2558-5521-GEN-E-DWG-SPD

Rev.

-

Document Title

Equipment Spider Diagram

Scale

1:1

DESIGNED:

ANSA

DRAWN:

ANSA

APPROVED:

RORI

DATE:

01/12/2025

DATE:

01/12/2025

DATE:

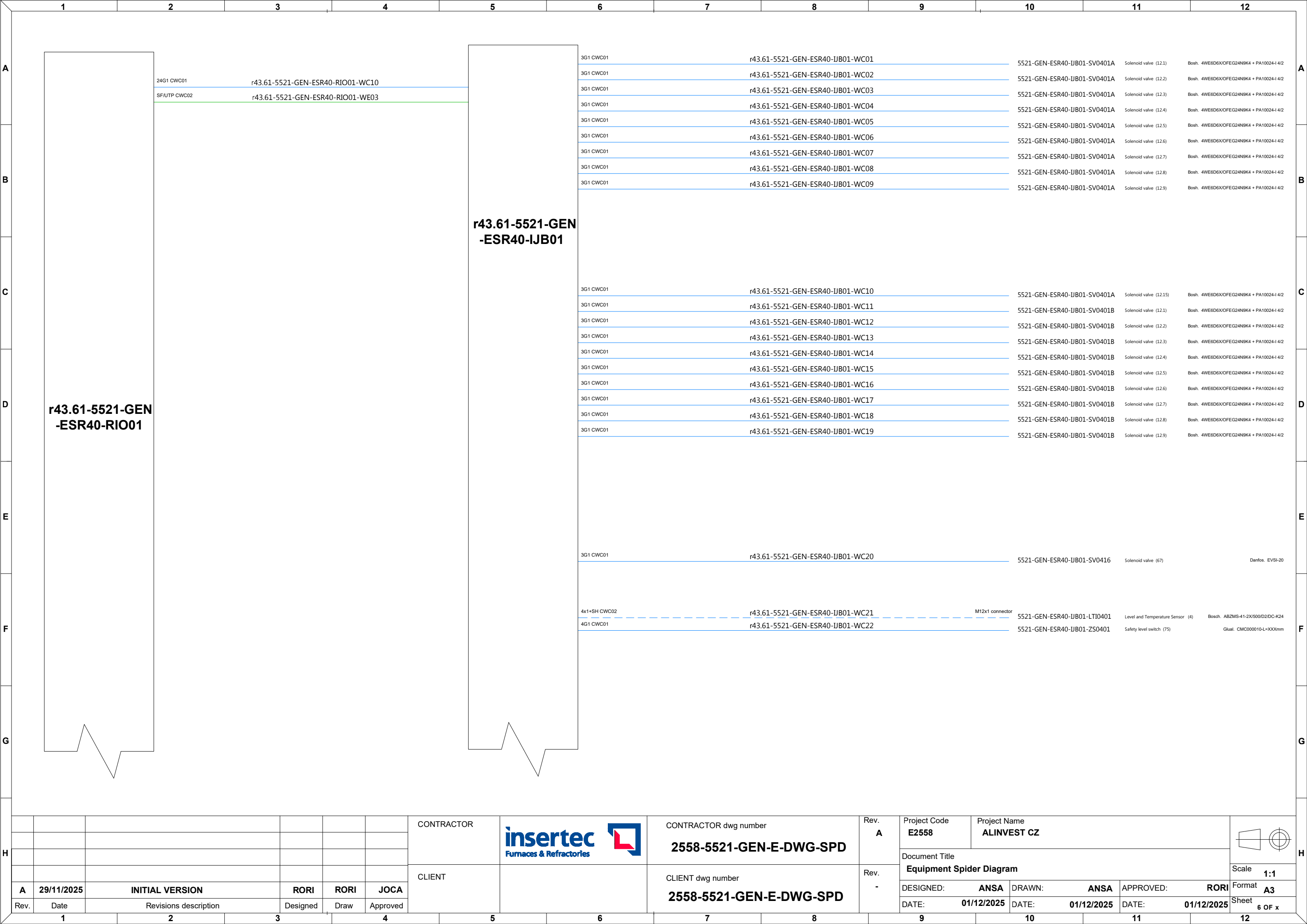
01/12/2025

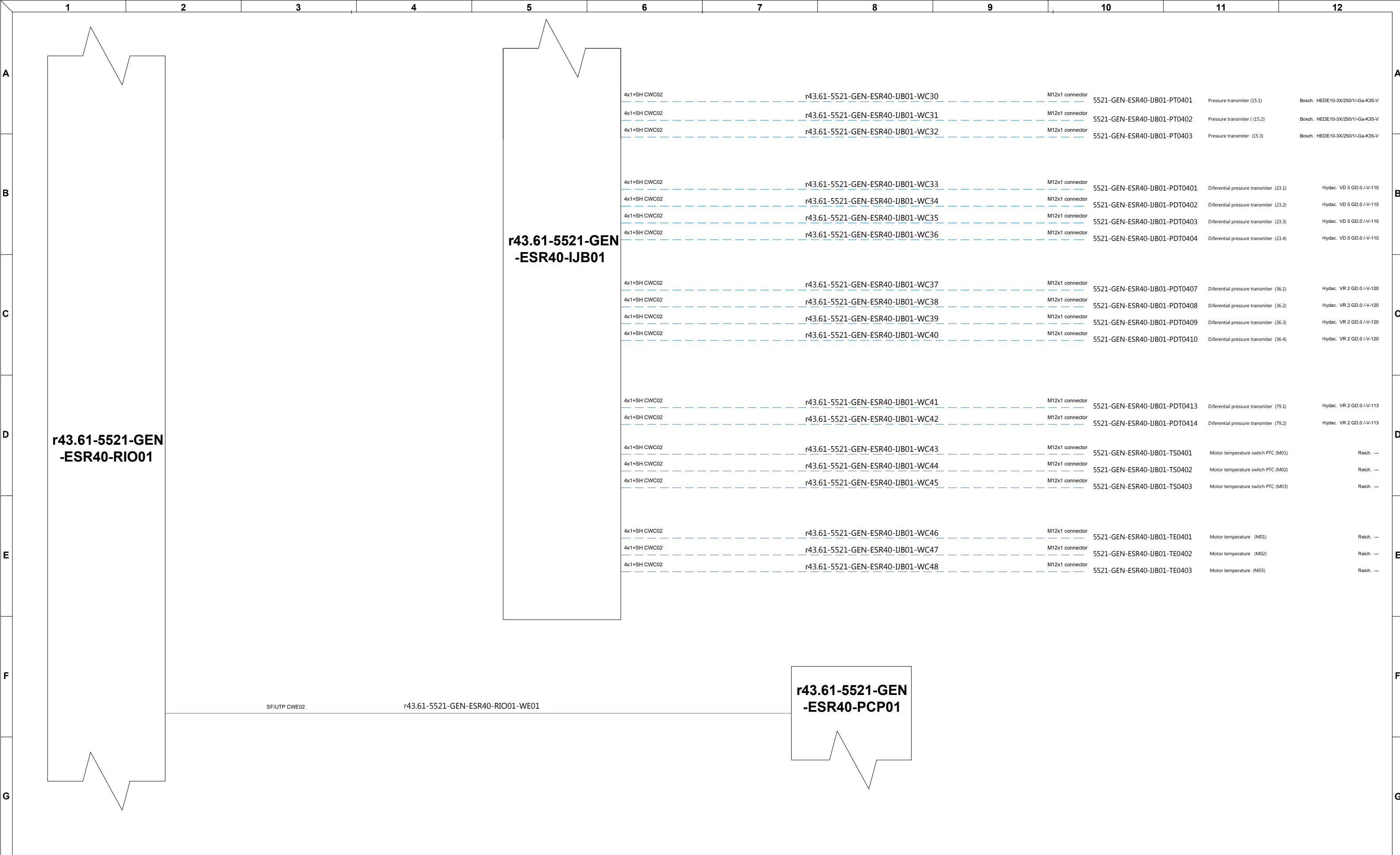
Format


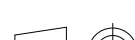
A3

Sheet

5 OF x





H							CONTRACTOR		CONTRACTOR dwg number <b>2558-5521-GEN-E-DWG-SPD</b>	Rev. <b>A</b>	Project Code <b>E2558</b>	Project Name <b>ALINVEST CZ</b>				H							
											Document Title <b>Equipment Spider Diagram</b>			Scale <b>1:1</b>									
	<b>A</b>	<b>29/11/2025</b>	<b>INITIAL VERSION</b>	<b>RORI</b>	<b>RORI</b>	<b>JOCA</b>					DESIGNED: <b>ANSA</b>	DRAWN: <b>ANSA</b>	APPROVED: <b>RORI</b>	Format <b>A3</b>									
	Rev.	Date	Revisions description	Designed	Draw	Approved	CLIENT		CLIENT dwg number <b>2558-5521-GEN-E-DWG-SPD</b>	Rev. <b>-</b>	DATE: <b>01/12/2025</b>			DATE: <b>01/12/2025</b>	DATE: <b>01/12/2025</b>	Sheet <b>7 OF x</b>							
1		2		3		4		5		6		7		8		9		10		11		12	

